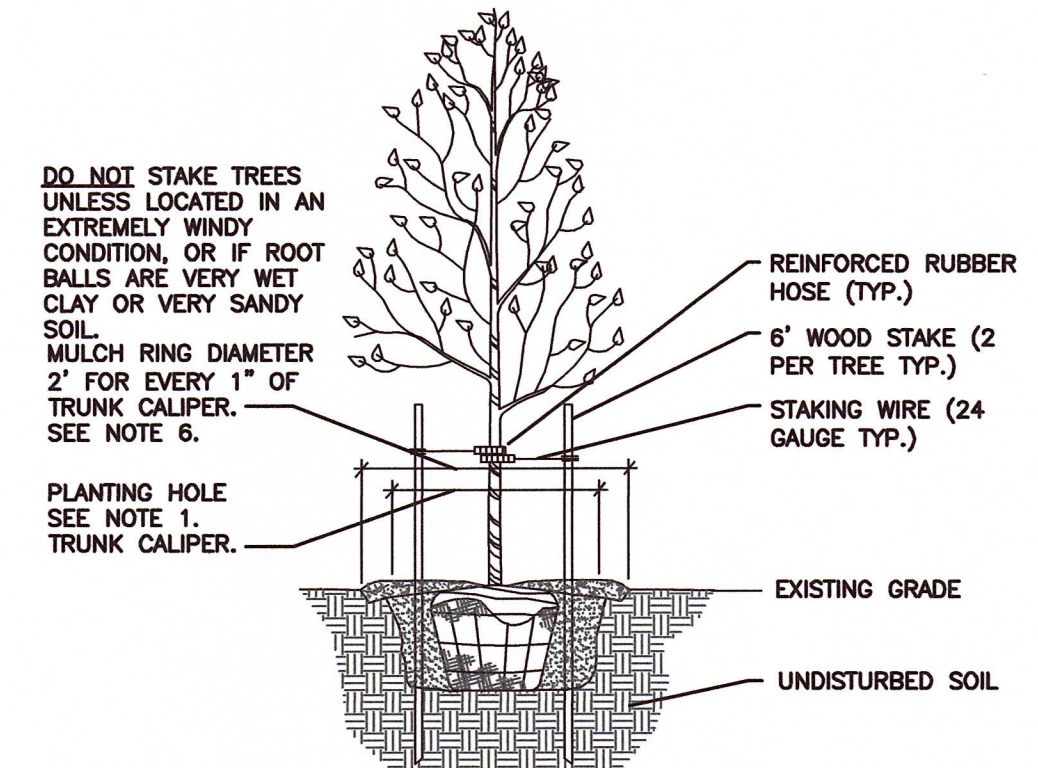


SHRUB PLANTING DETAIL



- PLANTING NOTES:
1. EXCAVATE PLANTING HOLE TO A DEPTH NOT TO EXCEED THE DEPTH OF THE ROOT BALL. HOLE DIAMETER TWICE ROOT BALL WIDTH.
 2. SET ROOT BALL AT, OR SLIGHTLY ABOVE FINISHED GRADE. DO NOT COVER THE ROOT BALL WITH SOIL.
 3. CUT TWINE, OR BURLAP, FROM AROUND TRUNK. CUT WIRE BASKET FROM THE TOP PORTION OF THE ROOT BALL (IF APPLICABLE).
 4. BACKFILL WITH EXISTING SOIL. USE OF SOIL AMENDMENTS IS NOT RECOMMENDED.
 5. TAMP SOIL AROUND ROOT BALL FIRMLY.
 6. MULCH RING, WITH HAND CUT EDGE, SHALL BE PLACED AROUND EACH TREE. IF NOT LOCATED IN A MULCHED BED, PLACE 3\"/>
 - 7. ONLY PRUNE DEAD, BROKEN, OR CROSSOVER LIMBS.

TREE PLANTING

LANDSCAPING LEGEND

SYMBOL	KEY	QUANTITY	BOTANICAL NAME COMMON NAME	SIZE	CONDITION
--------	-----	----------	-------------------------------	------	-----------

BN	3	BETULA NIGRA 'HERITAGE' HERITAGE RIVER BIRCH (MULTI-STEM)	12' HT	B&B
----	---	--	--------	-----

EP	15	ECHINACEA PURPUREA PURPLE CONEFLOWER	18" HT.	CONT.
CS	9	CORNUS SERICEA 'KELSEY' DWARF RED-TWIG DOGWOOD	24" HT.	CONT.
PV	11	PANICUM VIRGATUM SWITCHGRASS	24" HT.	CONT.
MD	19	MONARDA DIDYMA RED BEEBALM	18" HT.	CONT.
VT	7	VIBURNUM TRILOBUM 'COMPACTA' COMPACT CRANBERRYBUSH VIBURNUM	24" HT.	CONT.
IV	6	ITEA VIRGINICA SWEETSPIRE	18" HT.	CONT.
AN	29	ASTER NOVA-ANGLIAE NEW ENGLAND ASTER	12" HT.	CONT.
RH	17	RUBRICKIA HIRTA BLACK EYED SUSAN	18" HT.	CONT.
OC	11	OSMUNDA CINNAMOMEA CINNAMON FERN	18" HT.	CONT.

- NOTES:
1. PLANTING AREAS SHALL RECEIVE WEED BARRIER FABRIC AND 2" OF SHREDDED BARK MULCH (COLOR CHOCOLATE).
 2. ALL PLANT MATERIALS SHALL MEET THE SPECIFICATIONS OF THE AMERICAN ASSOCIATION OF NURSERYMEN FOR NO. 1 GRADE.
 3. BENTGRASS (AGROSTIS TENUIS) SHALL BE SEED AT 30 LBS. PER ACRE.

420 Allegheny Street
Holidaysburg, PA 16648
P: (814) 696-7430

KELLER ENGINEERS
CIVIL • STRUCTURAL • SURVEY
www.keller-engineers.com

REVISION DESCRIPTION

DATE & INITIALS	REVISION DESCRIPTION

SCALE: 1"=10'
10' 0' 10'

LANDSCAPE PLAN

WORDS WORTH AVE. GREEN INFRASTRUCTURE
CITY OF ALTOONA

CITY OF ALTOONA, BLAIR COUNTY
PENNSYLVANIA

1.14-34-53
N/F
CITY OF ALTOONA
200615531

1.14-34-52
N/F
CITY OF ALTOONA
200615134

1.14-34-51
N/F
CITY OF ALTOONA
200616654

PROJECT NO.: 1989-ES
DATE: 7/7/17
DESIGNED BY: ALL
DRAWN BY: MHH
CHECKED BY: MHH

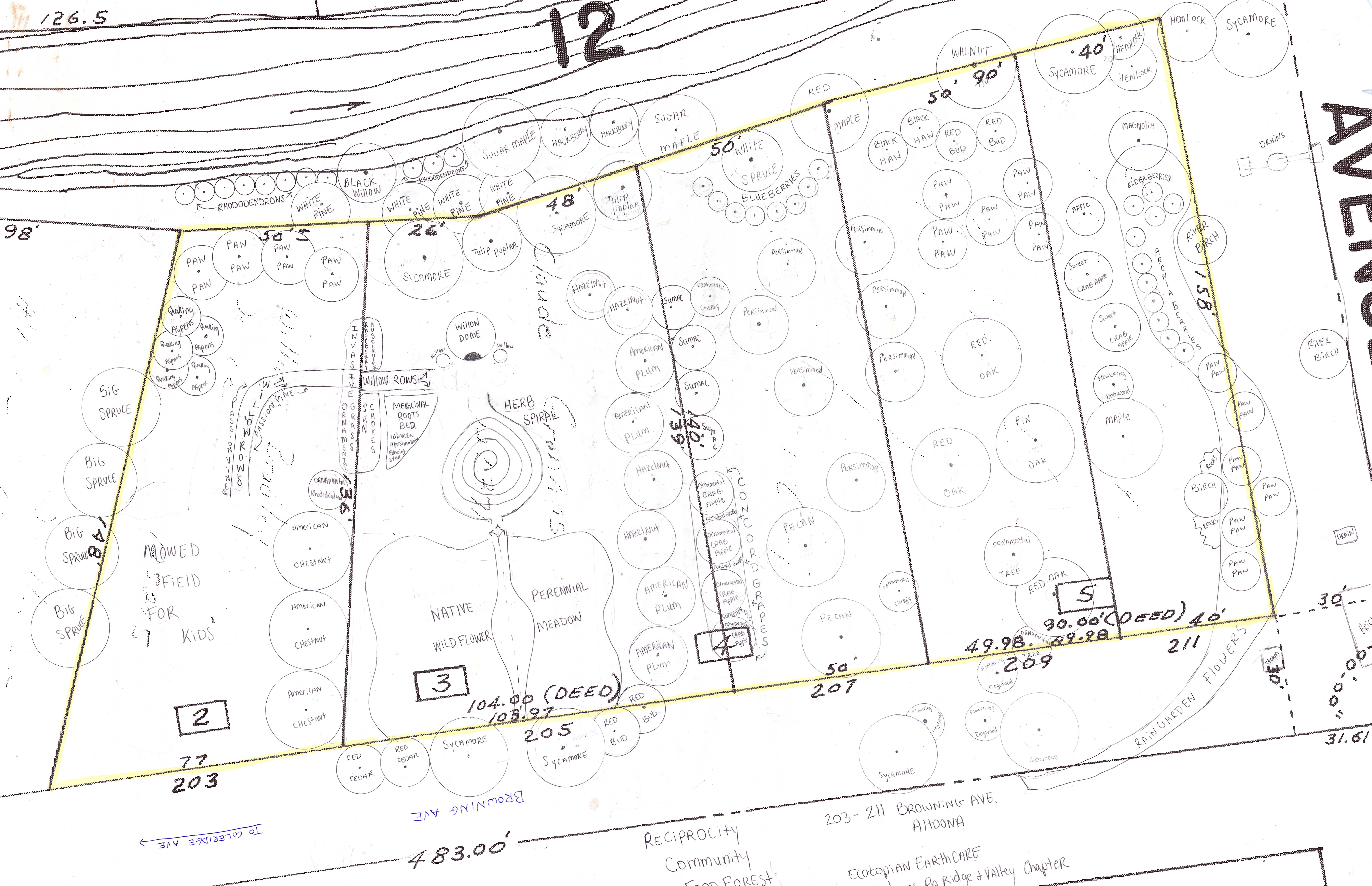
KELLER ENGINEERS, INC.
1989-ES
7/7/17
ALL
MHH
MHH

6

126.5

12

98'



TO COLLEIDGE AVE

BROWNING AVE

483.00'

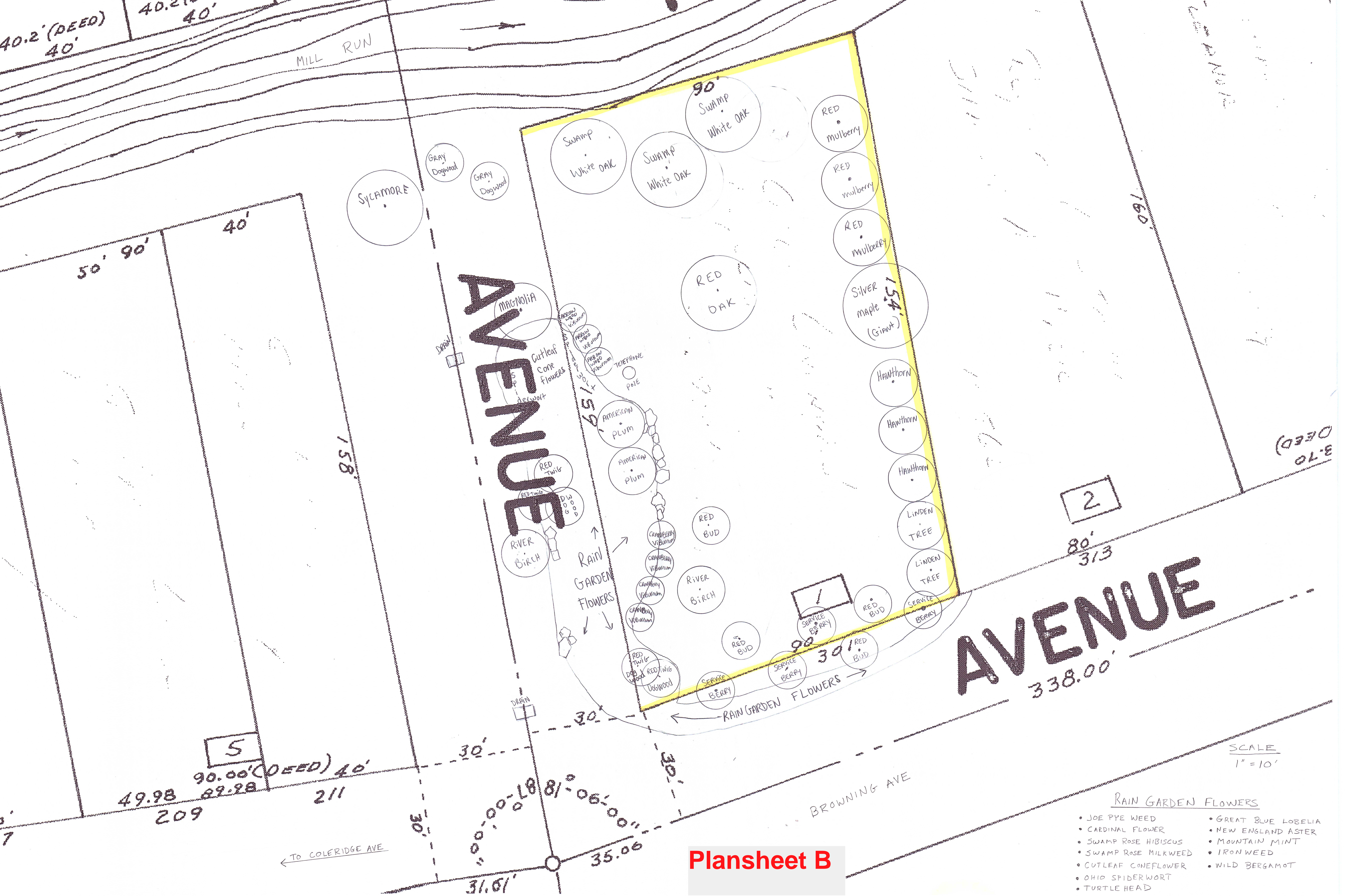
RECIPROCITY
Community
FOOD FOREST

203-211 BROWNING AVE.
AHOONA

ECOTOPIAN EARTHCARE
Wildones PA Ridge & Valley Chapter

Plansheet A

SCALE
1" = 10'



AVENUE

AVENUE

Plansheet B

RAIN GARDEN FLOWERS

- JOE PYE WEED
- CARDINAL FLOWER
- SWAMP ROSE HIBISCUS
- SWAMP ROSE MILKWEED
- CUTLEAF CONEFLOWER
- OHIO SPIDERWORT
- TURTLE HEAD
- GREAT BLUE LOBELIA
- NEW ENGLAND ASTER
- MOUNTAIN MINT
- IRON WEED
- WILD BERGAMOT

SCALE
1" = 10'

5
49.98 90.00 (DEED) 40'
89.98 211
209

2

80'
313

1

90'
301

TO COLERIDGE AVE

BROWNING AVE

MILL RUN

Sycamore

GRAY Dogwood

GRAY Dogwood

Swamp White OAK

Swamp White OAK

90' Swamp White OAK

RED mulberry

RED mulberry

RED mulberry

SILVER maple (GIANT)

HAWTHORN

HAWTHORN

HAWTHORN

LINDEN TREE

LINDEN TREE

SERVICE BERRY

SERVICE BERRY

RED OAK

AMERICAN PLUM

AMERICAN PLUM

RED TWIG

RED TWIG

RIVER BIRCH

CRANBERRY VIBURNUM

CRANBERRY VIBURNUM

CRANBERRY VIBURNUM

CRANBERRY VIBURNUM

CRANBERRY VIBURNUM

RED BUD

RED BUD

RED BUD

RED TWIG DOGWOOD

SERVICE BERRY

SERVICE BERRY

RED BUD

RED BUD

Cutleaf Cone Flowers

RAIN GARDEN FLOWERS

RAIN GARDEN FLOWERS

RAIN GARDEN FLOWERS

RED TWIG DOGWOOD

RED TWIG DOGWOOD

RED TWIG DOGWOOD

RED TWIG DOGWOOD

RED TWIG DOGWOOD

RED TWIG DOGWOOD